

PAIGE GAMECHANGER TEST REPORT_20141215

TEST SETUP:

Camera: Axis Q6045 PTZ Dome
Dell Windows 7 Laptop
Managed PoE Switch

RJ45 MECHANICAL PLUG:



CABLE TEST DRUM:



GAMECHANGER CABLE PLENUM, RISER & CM-LSZH PRINT LEGENDS:

46224P



46224PR



46224PCM



TEST PROTOCOL:

- 1- Cut 1,000 ft. (305 meter) cable Length for testing
- 2- Transfer test length cable to cable test drum to avoid cable to cable interference.
- 3- Extend cable from drum to test lab office for connection to camera and DVR recorder.
- 4- Connect both ends of test cable length to mechanical RJ45 plugs in EIA/TIA 568B configuration.
- 5- Plug test cable length into network switch and camera.

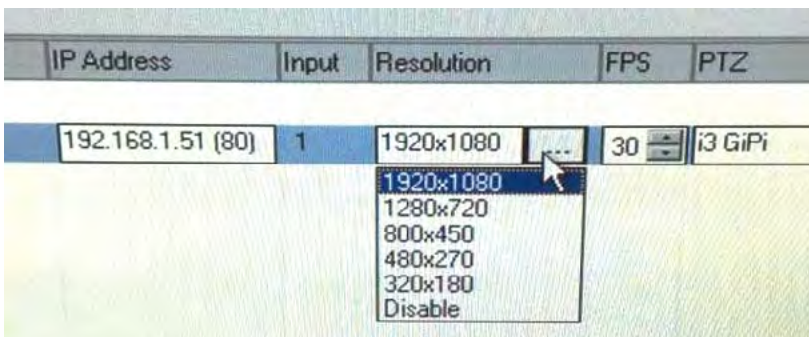


- 6- Power up Dell Laptop, Managed PoE Switch and camera through test cable
- 7- On Laptop check the video in the resolutions available.



CHANGING THE RESOLUTION UP TO THE HIGHEST AVAILABLE:

- 8- No video at lowest setting. Remove 10 FT.(3 Meters) of cable and re-install mechanical RJ45 plug.
- 9- Repeat steps 5 through 8 until video resolution is at 1920 X 1080p, desired resolution.



RESULTS:

- 46224P **Plenum cable** - 1920 x 1080p at 825 FT.(251 Meters)
- 46224pr **Riser cable** - 1920 x 1080p at 825 FT.(251 Meters)
- 46224PCM **CM-LSZH cable** - 1920 x 1080p at 825 FT.(251 Meters)



Testing carried out by: Mark Ahlers, Paige Engineering Mgr.
 Reviewed and approved by: John Pryma, Paige Director of Technology